



*"Branded with corporate Brands"*

*"Kurumsal Markalarla Markalařtık"*

## Mission

In accordance with the needs and dynamics of our developing industry; We strive to provide high quality and reliable products which are compatible with the demands and expectations of our customers and increasing our customer's benefits with an understanding of ethical trade and social responsibility that contribute to the environment, health, safety, and employment.

## Vision

Lorens Printing and Packaging which adopts total quality philosophy, aims to ensure sustainability and to make a difference in the packaging industry. Our company aims to provide unconditional customer satisfaction, strives to be a pioneer in terms of quality and cost.

## Misyon

Gelişmekte olan ülkemizin ihtiyaçlarına ve dinamiklerine uygun; çevre, sağlık, güvenlik ve istihdama katkı sağlayan, etik ticareti, sosyal sorumluluğu kendisine ilke edinen bir anlayışla müşterilerimizin talep ve beklentilerine uygun kaliteli ve güvenilir ürünler sunmak ve milli gelire katkıda bulunmak için çalışıyoruz.

## Vizyon

Toplam kalite felsefesini benimseyen Lorens Basım ve Ambalaj sürekliliği sağlamayı ve ambalaj sektöründe fark yaratmayı hedeflemektedir. Koşulsuz müşteri memnuniyeti sağlamayı amaçlayan firmamız, kalite ve maliyet açısından öncü olmak için çalışmaktadır.

## Our Values



Being customer oriented

*Müşteri odaklı olmak*



Believe in teamwork

*Takım çalışmasına inanmak*



Give importance to the environment, health, safety and education

*Çevre, sağlık, güvenlik ve eğitime önem vermek*



Believing in ethical trade

*Etik ticaret olgusuna inanmak*



Being honest and reliable

*Dürüst ve güvenilir olmak*



Being innovative

*Yenilikçi olmak*



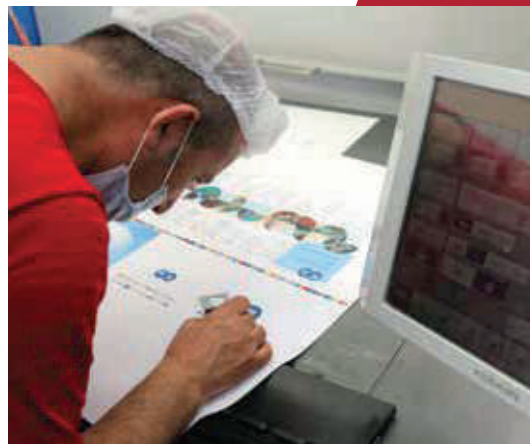
Always aim for the highest quality

*Daima en yüksek kaliteyi hedeflemek*

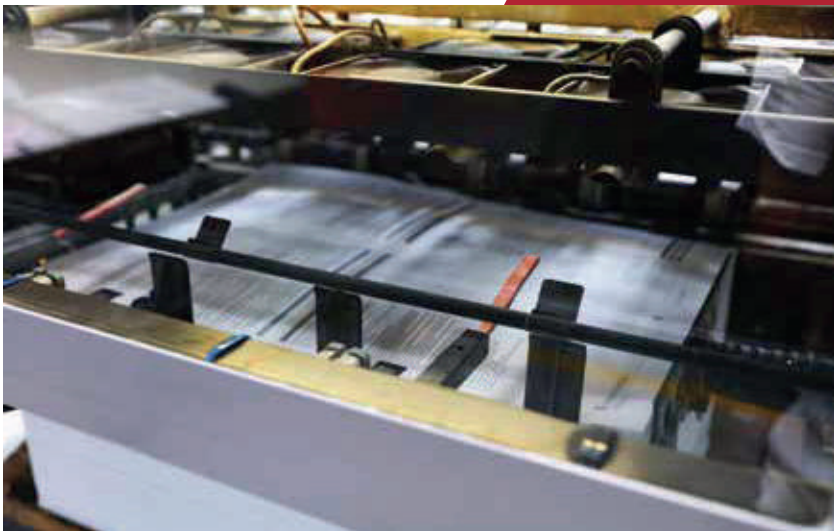


Creating more value

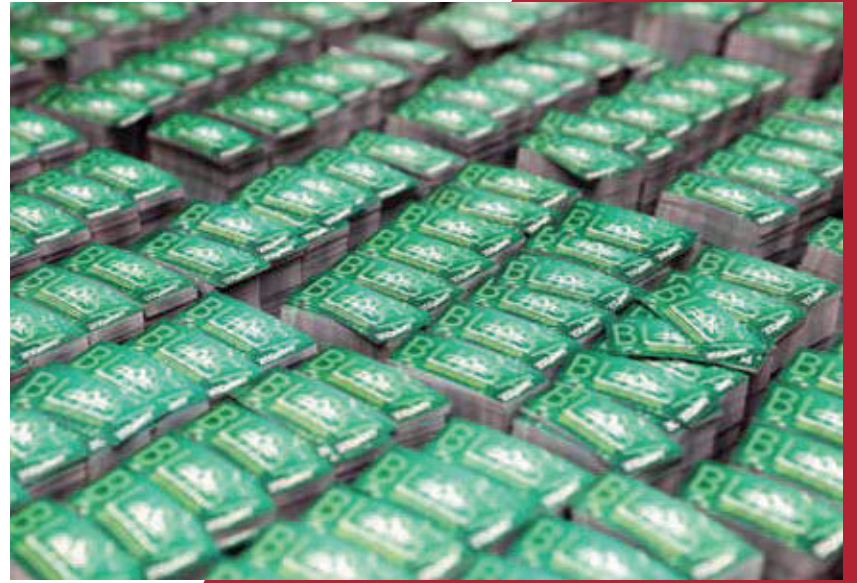
*Daha fazla değer katmak*



















# Food Packaging

## Gıda Ambalajları

We use edible inks and preservatives of vegetable origin, odorless, non-allergen in our company, which has the authority and capacity to produce cardboard packages that will come into direct or indirect contact with food. We use ISEGA certified cartons for food packaging.

Gıda ile direkt veya endirekt temas edecek karton ambalajları üretebilme yetki ve kapasitesine sahip şirketimizde, bitkisel kökenli, kokusuz, allergen olmayan mürekkep ve koruyucular kullanmaktayız. Gıda ambalajlarında ISEGA sertifikalı kartonlar kullanmaktayız.





# Chocolate & Confectionaries

## Çikolata ve Şekerleme Ambalajları

Chocolate is happiness, expression of emotions, a reward.

We offer you to provide your customers, products that make them feel special. We develop very prestigious, luxurious packaging series to the international food manufacturers and chain markets like Tesco, Morrison's, Waitrose, Aldi and LIDL every year.

*Çikolata mutluluktur, duyguların ifadesidir, ödüldür.*

*Müşterilerinize ürünleriniz kendilerini özel hissettirecek ambalajlarda sunmanızı sağlıyoruz. Uluslararası gıda üreticilerine ve zincir marketlere her yıl çok prestijli, lux ambalaj serileri geliştiriyoruz.*



# Beverages Packaging

## İçecek Ambalajları

We produce packagings for alcoholic and non-alcoholic beverage bottles, aluminum cans, cups, accessories like openers and packages in order to protect the product in the best way during the shipment. We apply special printing techniques to different types of cardboard to reflect the quality of your products.

Alkollü ve alkolsüz içecek gurupları için şişe, alüminyum kutu, bardak, açacak gibi ürünlerin kutularını ve aynı zamanda sevkiyat sırasında bu ürünleri en iyi şekilde koruyacak ambalajları üretiliyoruz. Ürünlerinizin kalitesini yansıtmak için çeşitli karton tiplerine göre özel baskı teknikleri uyguluyoruz.





Lorens Printing and Packaging serves its customers in the medical sector with its packaging that harmless to human health and reflects its product characteristics and quality.

Lorens Basım ve Ambalaj, medikal sektörde insan sağlığına değer veren, ürün özelliklerini ve kalitesini yansıtan ambalajlar ile müşterilerine hizmet vermektedir.

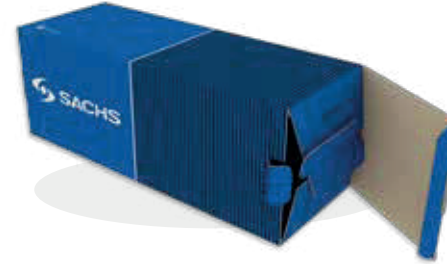
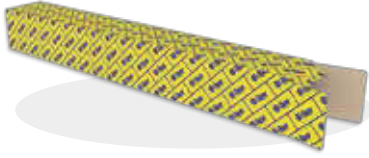


# Automotive Parts Packaging

## Otomotiv Ambalajları

We produce packages suitable for the specifications of the products, ranging from 100 grams windscreen wipers to 50 kilograms truck clutch lining used in the automotive sector. We are so assertive that we export our boxes to automotive manufacturers in Europe. We are preferred with our solutions such as JIT (Just In Time), CS (Consignee sales), Fixed price and storage in the user's factory or in a close area.

*Otomotiv sektöründe kullanılan 100 gramlık cam sileceğinden, 50 kiloluk kamyon debriyaj balatasına kadar çeşitli parçalara ürünlerin özelliğine uygun ambalajlar üretiyoruz. Bu konuda o kadar iddialıyız ki Avrupa daki otomotiv üreticilerine kutularımızı ihraç ediyoruz. JIT (Just In Time), CS (Consignee sales), Sabit fiyat ve kullanıcının fabrikasında veya yakın çevresinde depolama gibi çözümlerimizle tercih ediliyoruz.*





# Electric & Electronic Packaging

## Elektrik & Elektronik Ambalajları

Lorens Printing and Packaging provides its customers with high-quality packaging in a short leading time with the best solutions. Our company produces packages that adding value to the product in the electrical & electronic market and offers a wide range of products to its customers with many printing, cutting and laminating techniques.

Lorens Basım ve Ambalaj ihtiyaca yönelik ürettiği çözümlerle müşterilerine kısa sürede kaliteli ambalaj tedariki sağlamaktadır. Elektrik & Elektronik pazarında ürüne değer katan ambalajlar üreten firmamız, birçok basım, kesim ve laminasyon tekniğiyle müşterilerine geniş bir ürün yelpazesi sunmaktadır.

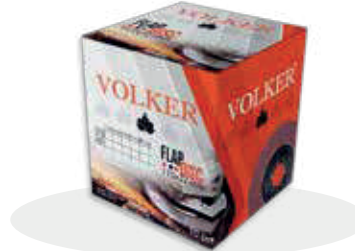


# Industrial Products Packaging

## Endüstriyel Ürünlerin Ambalajları

Packon has the capacity to provide services for all kinds of products regardless of the volume of the product to be packed, serves to the industries such as construction-kitchen and bathroom with different and needs-oriented packages. We test the accuracy of the packaging for our products with our material endurance testers (BCT).

*Paketlenecek ürünün hacmi farketmeksizin her türlü ürüne yönelik hizmet sunma kapasitesine sahip firmamız, inşaat-mutfak-banyo gibi sektörlere de farklı ve ihtiyaca yönelik ambalaj çeşitleri ile hizmet vermektedir. Malzeme dayanıklılık (BCT) test cihazlarımız ile ürün için ambalajın doğruluğunu test ediyoruz.*





# Stationary & Toy Packaging

## Kırtasiye & Oyuncak Ambalajları

We protect both the health of your children and your products. We select the inks and preservatives we use from odorless, non-allergenic plant origin. We know customer's behaviors and develop the most appealing packaging for making easy to make customer choose your brand on the market shelves.

Hem çocuklarınızın sağlığını hem de ürünlerinizi koruyoruz. Kullandığımız mürekkep ve koruyucuları kokusuz, allerjen olmayan bitkisel kaynaklı olanlardan seçiyoruz. Müşteri davranışını iyi biliyor ve market raflarında sizin markanızın seçilmesi için en albenili ambalajları geliştiriyoruz.



# Cosmetic Packaging

## Kozmetik Ambalajları

The final consumer in the cosmetics sector is very selective. We develop and produce packages that will attract the attention of the buyer, reflect your high quality and ensure the selection of your product. We surprise and pamper them with very special printing techniques and unprecedented box designs.

*Kozmetik sektöründeki nihai tüketici çok seçicidir. Alıcının dikkatini çekecek, yüksek kalitenizi yansıtacak, sizin ürününüzün seçilmesini sağlayacak ambalajları geliştiriyor ve üretiyoruz. Çok özel baskı teknikleri ve görülmemiş kutu dizaynları ile onları şaşırtıyor, şımartıyoruz.*





# Personal Care Packaging

## Kişisel Baskım Ambalajları

The buyers of this sector are very much affected by the allure of the packaging, similar to the buyers of cosmetic products. We produce the most beautiful box for you at the most cost effective way.

*Bu sektörün alıcıları kozmetik ürünleri alıcılarına benzer şekilde ambalajın albenisinden çok etkilenirler. Sizin için en güzel kutuyu en uygun maliyetle üretiyoruz.*



# Kitchenware Packaging

## Mutfak Gereçleri Ambalajları

The packaging of kitchen utensils should protect the product and attract the customers.  
We produce packages that will protect your product as needed and appeal very nice to the end users.

*Mutfak gereçlerinin ambalajları hem ürünü korumalı, hem de ev hanımlarını cezbetmelidir.  
Ürününüzü gerektiği gibi koruyacak ve bayanların göz zevkine hitap eden ambalajlar üretiyoruz.*





# Construction Materials Packaging

## İnşaat Malzemeleri Ambalajları

From door locks, to bathroom accessories, washbasin to ceramic tiles, we produce your packages that will protect your products and reflect your quality.

*Kapı kilidinden, banyo aksesuarlarına, lavabodan seramik fayanslara kadar hem ürünü koruyacak hem de kalitenizi yansıtacak ambalajlarınızı üretiyoruz.*



# Textile Packaging

## Tekstil Ambalajları

Textile is fashion. The buyer expects continuous innovation in product and packaging. They want to see, touch and feel. We produce trendy packages that will reflect the quality of your product.

Tekstil modadır. Alıcı üründe ve ambalajda sürekli yenilik bekler. Görmek, dokunmak hissetmek ister. Ürününüzün kalitesini yansıtacağınız zevkli ambalajlar üretiyoruz.





# Rigid Boxes

## Taslamalı Kutular

It is an indispensable package of cosmetics and electronics sector that provides elegant presentation. Should we make your customers feel that they are privileged with magnet lid or telescopic boxes with design and special materials suitable for your products?

*Kozmetik ve elektronik sektörünün, şık sunum sağlayan vazgeçilmez ambalajıdır.*

*Ürünüze uygun dizayn ve özel malzemelerle mıknatıslı kapak veya teleskopik kutularla, müşterilerinize ayrıcalıklı olduklarını hissettirelim mi?*



# SRP Display (Shelf Ready Packaging)

## Masaüstü Standlar

It is the biggest visual advertising tool that will attract the attention of the customers in the markets in order to protect and exhibit your products. We will develop the best SRPs for you.

Marketlerde müşterinin dikkatini çekecek, ürünlerinizi hem koruyan hem sergileyen en büyük görsel reklam aracı. Sizin için en güzelini geliştireceğiz.





# FSDU (Free Standing Display Units)

Ayaklı Standlar



# Packaging by Purposes

## Kullanım Amaçlarına Göre Ambalajlar

A kind of packaging that protects the products during the shipment, and exhibits on the shelf. The packages we use for fresh vegetables and fruits are not the same as the cosmetics or chocolate packaging. Take advantage of our experience and expertise.

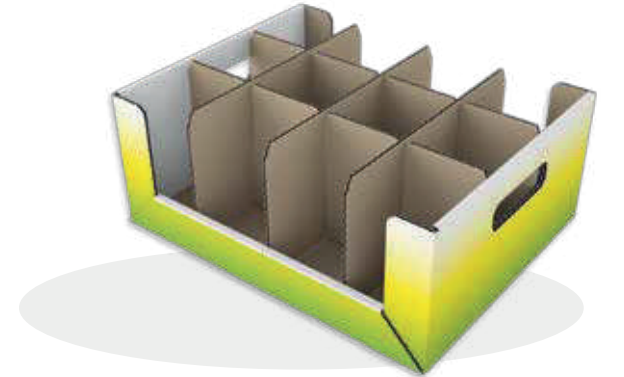
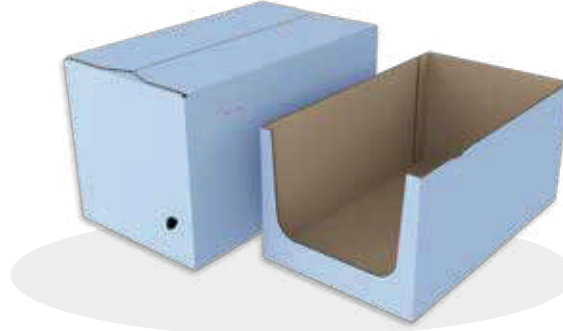
*Ürünleri sevkiyatta korumak, rafta sergilenmesini sağlayan ambalaj çeşitleridir. Taze sebze meyve ambalajı ile kozmetik veya çikolata ambalajından beklenen aynı şey değildir. Tecrübe ve uzmanlığımızdan yararlanın.*





# Packaging by Purposes

## Kullanım Amaçlarına Göre Ambalajlar

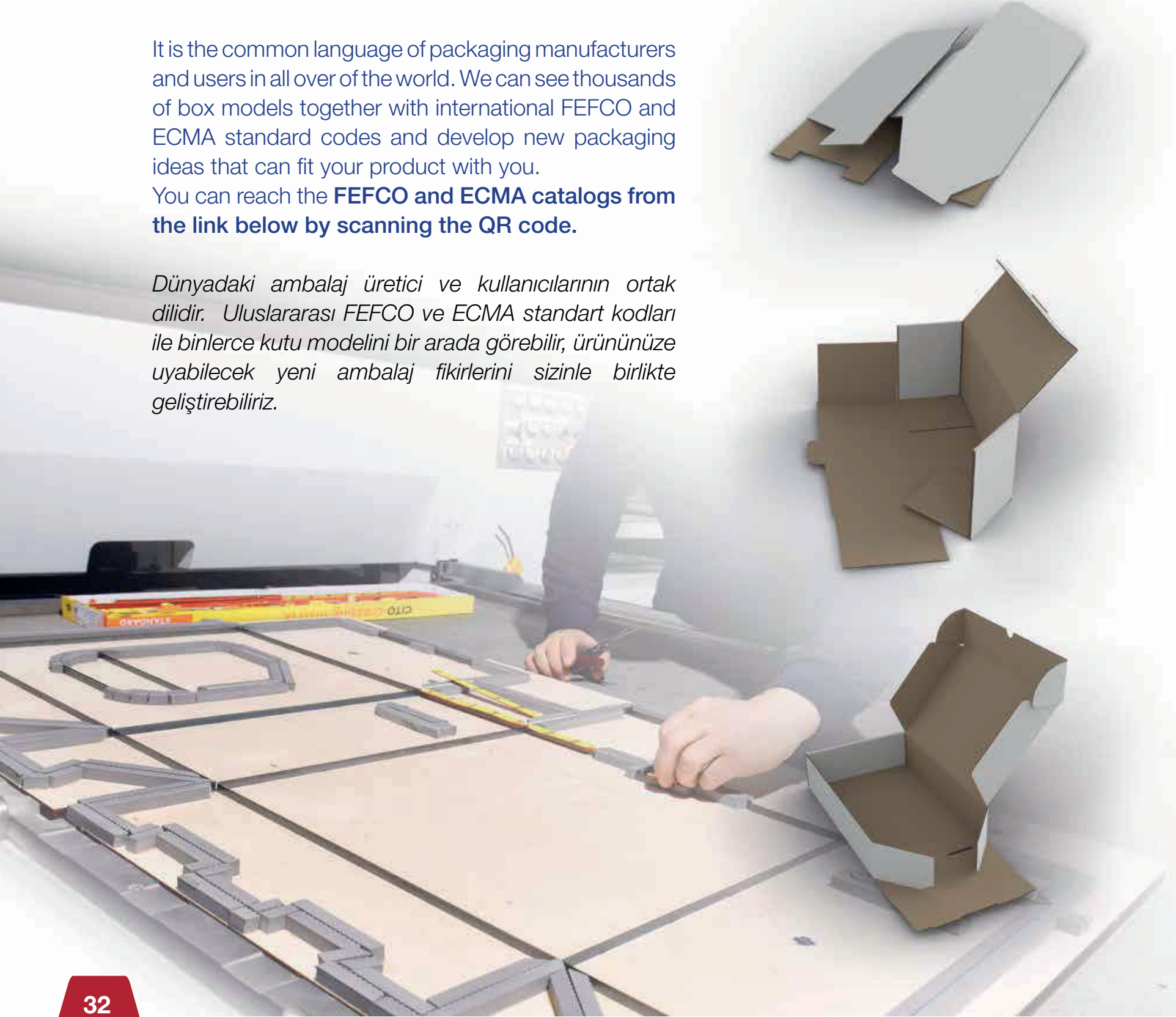


## Uluslararası Kutu Modelleri

It is the common language of packaging manufacturers and users in all over of the world. We can see thousands of box models together with international FEFCO and ECMA standard codes and develop new packaging ideas that can fit your product with you.

You can reach the **FEFCO and ECMA catalogs from the link below by scanning the QR code.**

*Dünyadaki ambalaj üretici ve kullanıcılarının ortak dilidir. Uluslararası FEFCO ve ECMA standart kodları ile binlerce kutu modelini bir arada görebilir, ürününüze uyabilecek yeni ambalaj fikirlerini sizinle birlikte geliştirebiliriz.*





## Uluslararası Kutu Modelleri

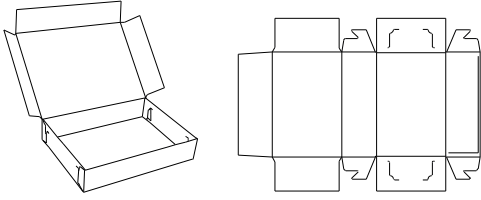
Cartons / Karton

Food boxes / Gıda Kutuları

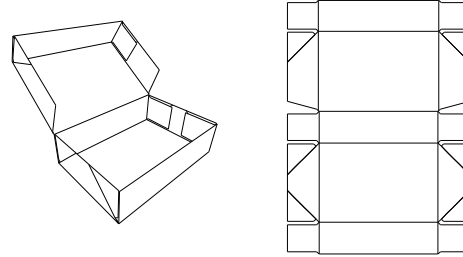
Food boxes are used to keep and carry food products safely and easily.

Gıda kutuları, farklı gıda ürünlerinin rahatça saklanması ve taşınması için kullanılan kutulardır.

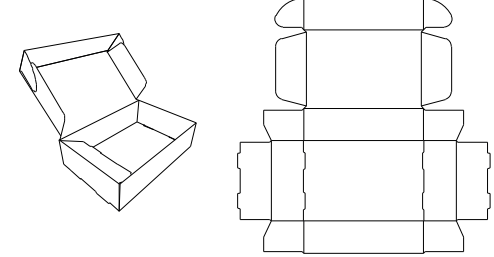
ECMA B3353



ECMA B6020



ECMA B2150



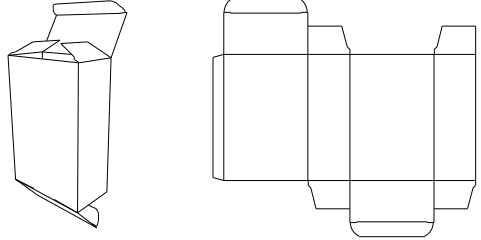
Cartons / Karton

Tuck end boxes / İlaç tipi kutular

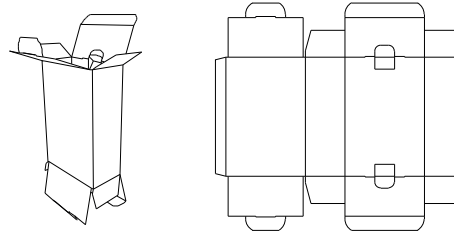
Tuck end box is the box model which enables to open and close easily and smoothly because it has double flaps.

İlaç tipi kutu, çift kapaklı olması nedeniyle rahat ve kolay açılıp kapanma olanağı sunan kutu modelidir.

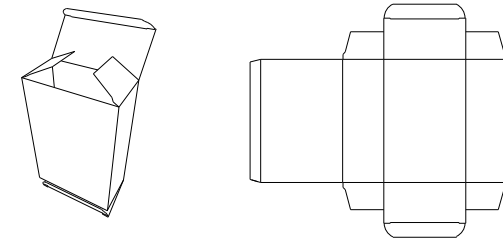
ECMA A2120



ECMA A9898



ECMA A2420



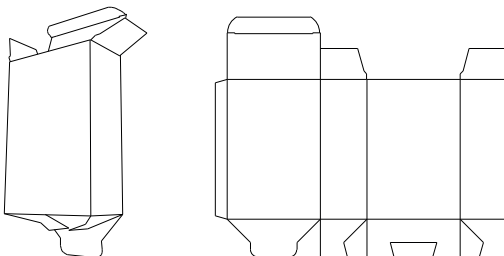
Cartons / Karton

Snap lock boxes / Dip kilit kutular

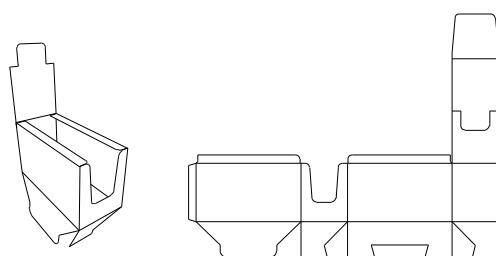
Snap lock box is the box model with lock system to set up manually.

Dip kilit kutu, manuel (elle) kurulumu yapılan kilit sistemli kutu modelidir.

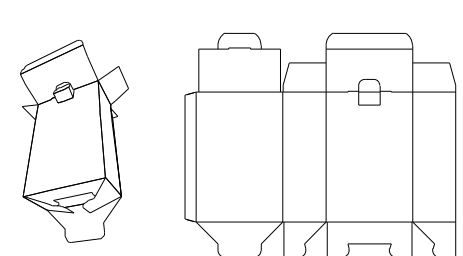
ECMA A5520



ECMA FC0603



ECMA A5598



## Uluslararası Kutu Modelleri

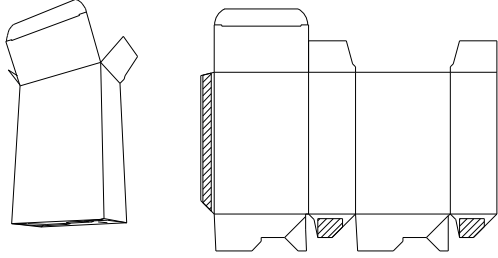
Cartons / Karton

Tuck top auto bottom boxes / Dip kilit yapıştırılmalı kutular

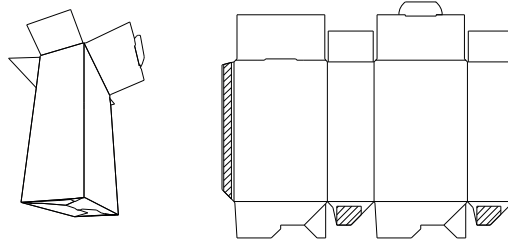
Tuck top auto bottom box is delivered to the customer the way that bottom end is glued and folded. It is already setup and ready to use when unfolded.

Dip kilit yapıştırılmalı kutu, tabanı yapıştırılmış ve katlanmış şekilde kullanıcıya ulaşan ve açıldığında otomatik olarak kurulan kutu modelidir.

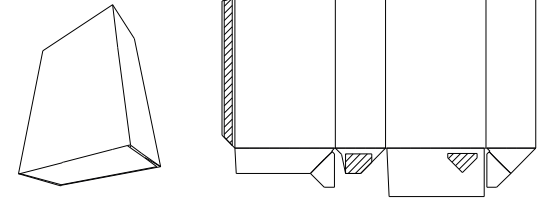
ECMA A6021



ECMA A6056



ECMA A6101



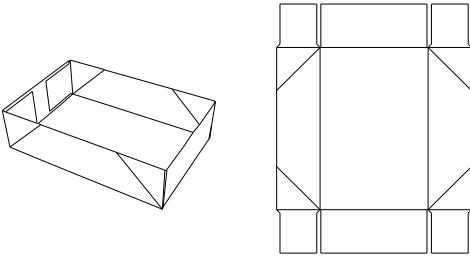
Cartons / Karton

Tray boxes / Tava tipi kutular

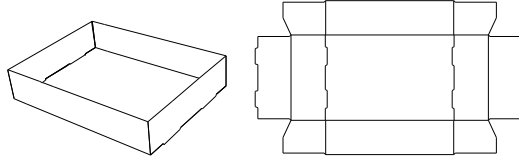
Tray box is used for products like honey, jam, beverage and conserved food offered in the glass jar or bottle.

Tava tipi kutu, bal, reçel, konserve, içecek gibi cam kavanozda ve şişede sunulan ürünlerin içine konulduğu kutu modelidir.

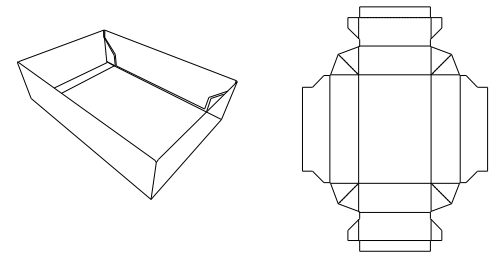
ECMA B4020



ECMA B2110



ECMA B1021



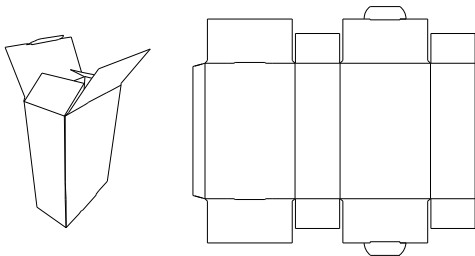
Cartons / Karton

Standard boxes / Standart kutular

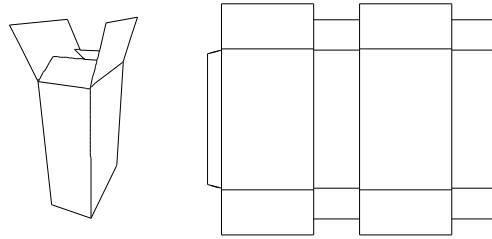
Standard box is one of the most used box models. It is also called a-type box.

Standart kutu, en çok tercih edilen kutu modellerinden biridir. Standart kutu, A box kutu olarak da isimlendirilir.

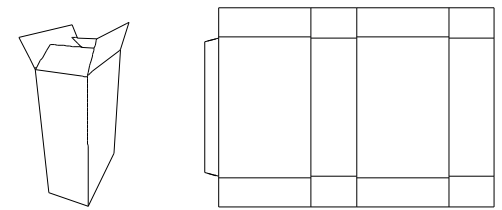
ECMA A5656



ECMA A1010



ECMA A1212





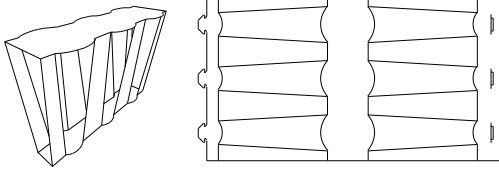
## Uluslararası Kutu Modelleri

Cartons / Karton

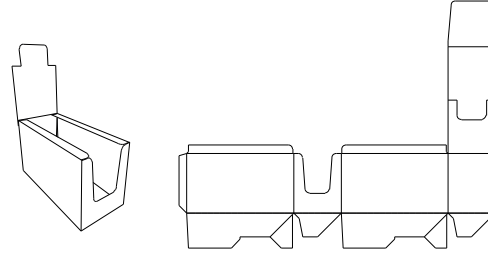
Special boxes / Özel kutular

Special boxes are box models produced in accordance with customers' needs and different from usual box models.  
Özel kutular, müşteri ihtiyaçları doğrultusunda klasik kutu modellerinden farklı olarak üretilen kutu çeşitleridir.

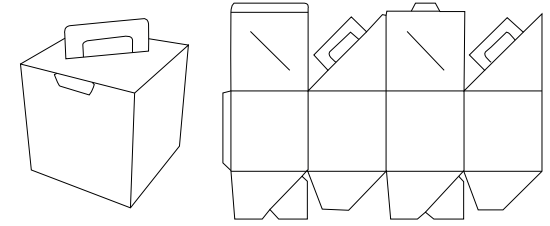
ECMA B1021



ECMA FC0602



PS 1000

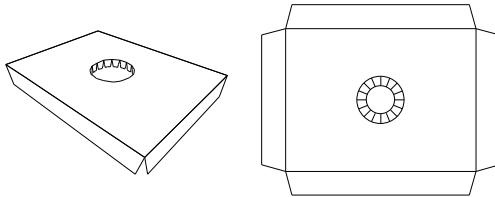


Cartons / Karton

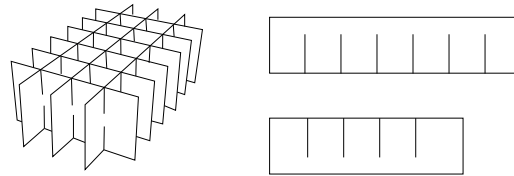
Separators / Seperatörler

Separators are used for products in the box to protect by cushioning and keep them from moving.  
Seperatör, kutu içerisindeki ürünleri ayırtırmak, ürünlerin birbirlerine temas etmesini önlemek ve sabit durmasını sağlamak için kullanılır.

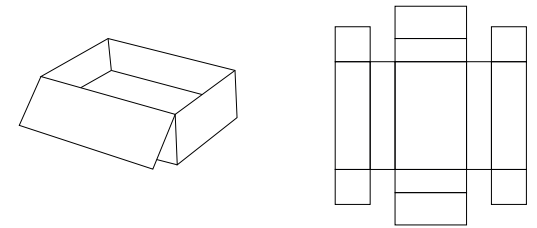
ECMA F8003



ECMA F8031



ECMA B8003b

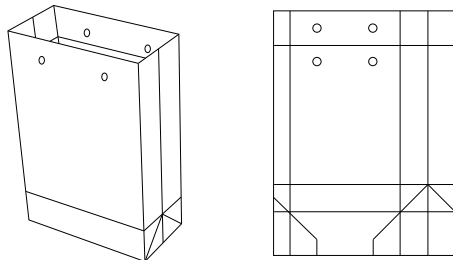


Cartons / Karton

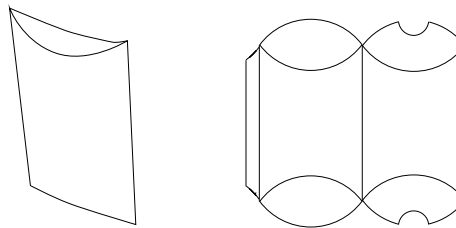
Carton bags &amp; pillows / Karton Çantalar

Carton bags which are indispensable for retail industry are essential tools to carry purchased products easily.  
Özellikle perakende sektörü için vazgeçilmez olan karton çantalar, alınan ürünün rahat taşınması için önemli araçlardır.

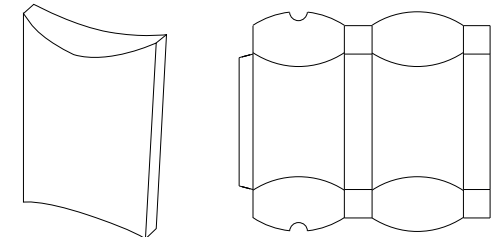
PCB 1000



ECMA F7001a



ECMA F7001b



## Uluslararası Kutu Modelleri

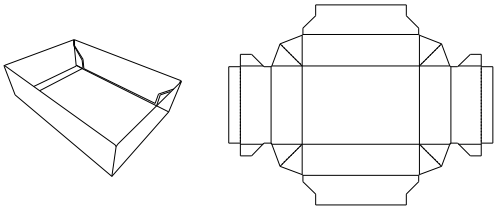
Cartons / Karton

Shirt boxes / Gömlek kutuları

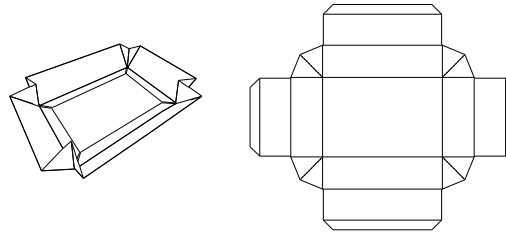
Shirt boxes which made of cardboards or cartons are produced as two separate pieces (box itself and lid).

Gömlek kutuları, 2 parça olarak (kutu ve kapak) üretilmekte olup mukavva veya karton gibi farklı malzemelerden yapılmaktadır.

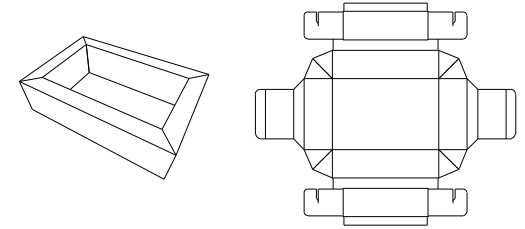
ECMA B1021



ECMA B1011



ECMA B1411



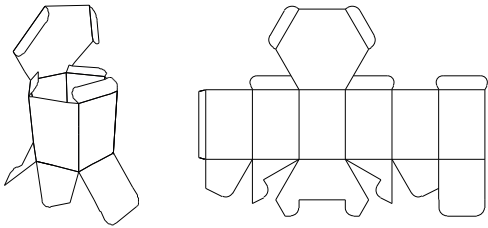
Cartons / Karton

Polygonal boxes / Çokgen kutular

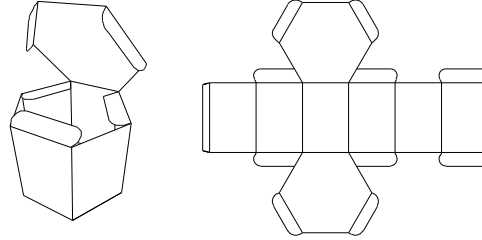
Polygonal box is the box type with different numbers of sides in contradistinction to classical box with four sides.

Çokgen kutu, klasik 4 kenarlı kutulardan farklı kenar sayısına sahip olan kutu tipidir.

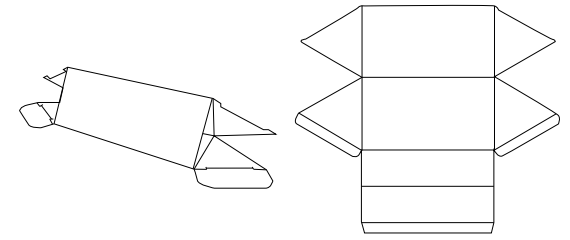
ECMA B4055



ECMA B4020



ECMA C1020



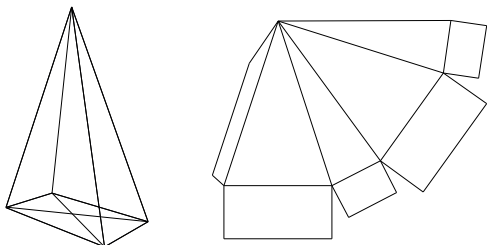
Cartons / Karton

Angled boxes / Açılı kutular

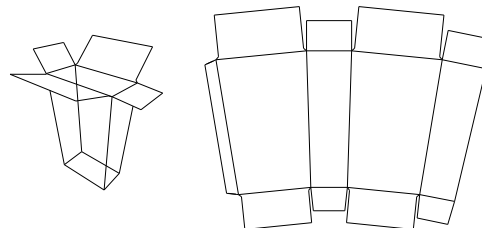
Angled box is the box model which has sloped shape in contradistinction to conventional box models.

Açılı kutu, klasik kutu modellerinden farklı olarak eğimli şekle sahip kutu modelidir.

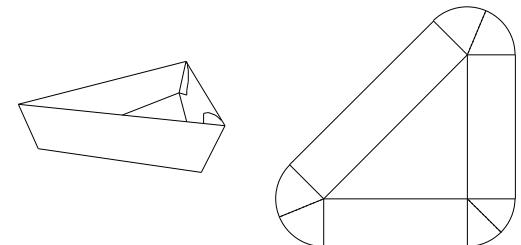
ECMA C2210



ECMA C2110



ECMA D1011



## Uluslararası Kutu Modelleri

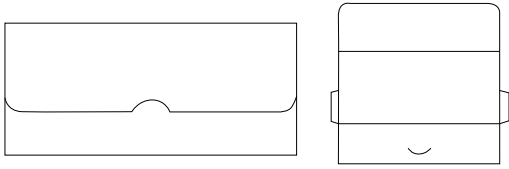
Cartons / Karton

Envelopes / Zarflar

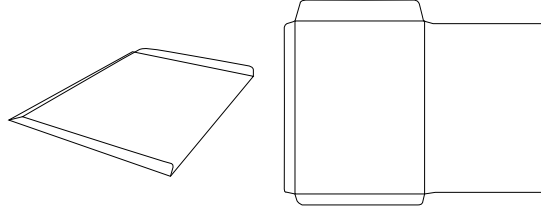
Envelope is one of the most important printed corporate identity materials.

Zarf, kurumsal kimliğin en önemli baskılı materyallerinden biridir.

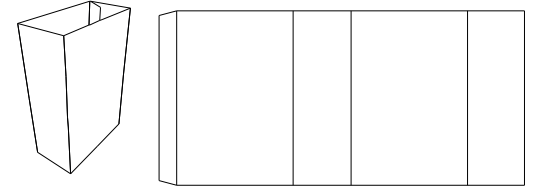
ECMA F6093a



ECMA F6093b



ECMA A0101



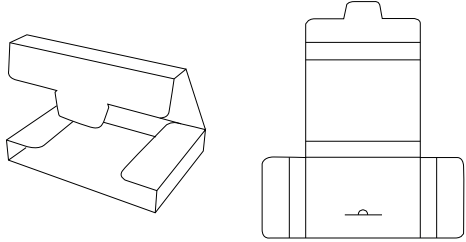
Cartons / Karton

Folders / Dosyalar

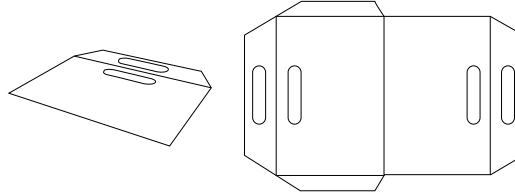
Folder is one of basic printed corporate identity materials.

Dosya, kurumsal kimliğin temel baskılı materyallerinden biridir.

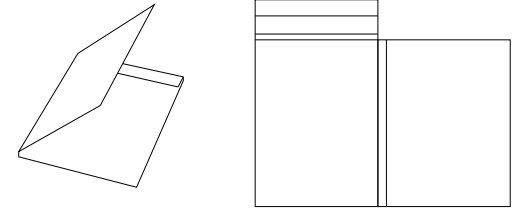
ECMA E4082



ECMA F7011



PF1000



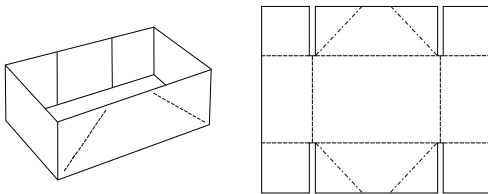
Corrugated cardboards / Oluklu mukavvalar

Tray boxes / Tava tipi kutular

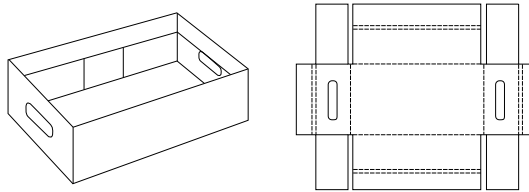
Tray box is used for products like honey, jam, beverage and conserved food offered in the glass jar or bottle.

Tava tipi kutu, bal, reçel, konserve, içecek gibi cam kavanozda ve şişede sunulan ürünlerin içine konulduğu kutu modelidir.

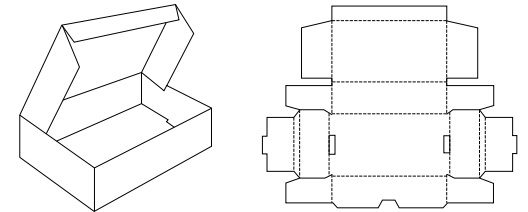
FEFCO 0451



FEFCO 0430



FEFCO 0429





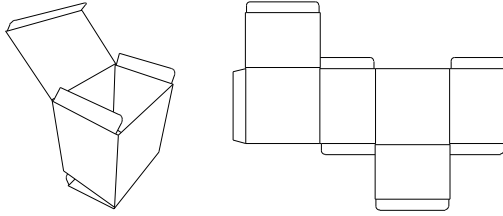
## Uluslararası Kutu Modelleri

Corrugated cardboards / Oluklu mukavvalar

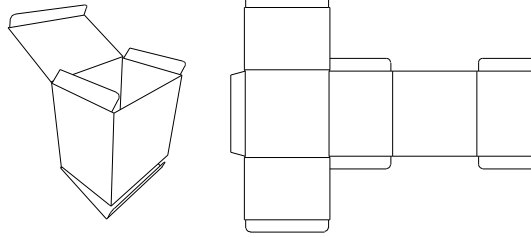
Tuck end boxes / İlaç tipi kutular

Tuck end box is the box model which enables to open and close easily and smoothly because it has double flaps.  
İlaç tipi kutu, çift kapaklı olması nedeniyle rahat ve kolay açılıp kapanma olanağı sunan kutu modelidir.

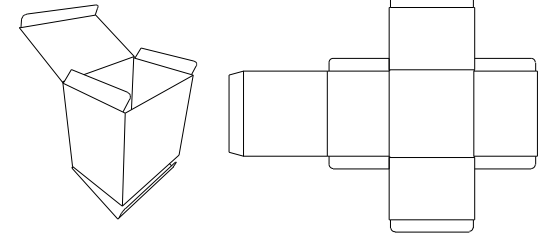
FEFCO 0211



FEFCO 0210a



FEFCO 0210b

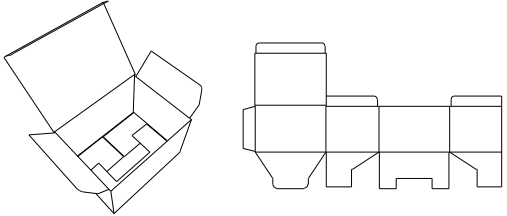


Corrugated cardboards / Oluklu mukavvalar

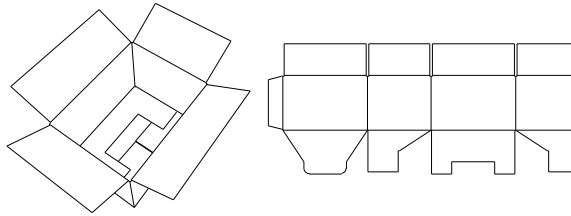
Snap lock boxes / Dip kilit kutular

Snap lock box is the box model with lock system to set up manually.  
Dip kilit kutu, manuel (elle) kurumu yapılan kilit sistemli kutu modelidir.

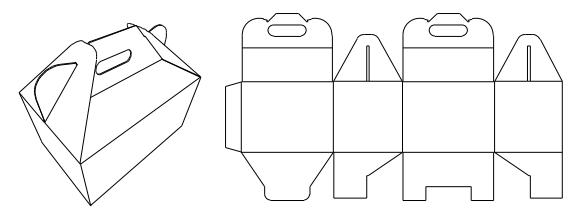
FEFCO 0215



FEFCO 0216



FEFCO 0217

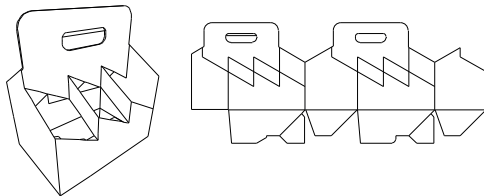


Corrugated cardboards / Oluklu mukavvalar

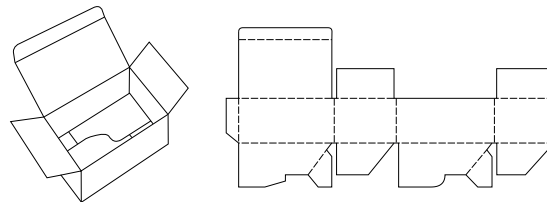
Tuck top auto bottom boxes / Dip kilit yapıştırımlı kutular

Tuck top auto bottom box is delivered to the customer the way that bottom end is glued and folded. It is already setup and ready to use when unfolded.  
Dip kilit yapıştırımlı kutu, tabanı yapıştırılmış ve katlanmış şekilde kullanıcıya ulaşan ve açıldığında otomatik olarak kurulan kutu modelidir.

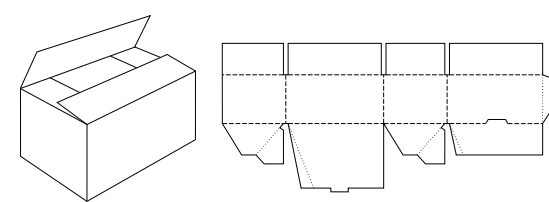
FEFCO 0717



FEFCO 0713



FEFCO 0701



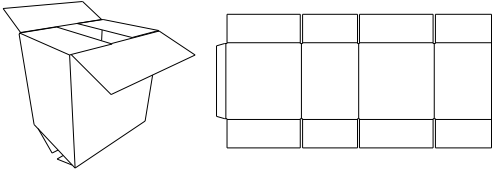
Corrugated cardboards / Oluklu mukavvalar

Standard boxes / Standart kutular

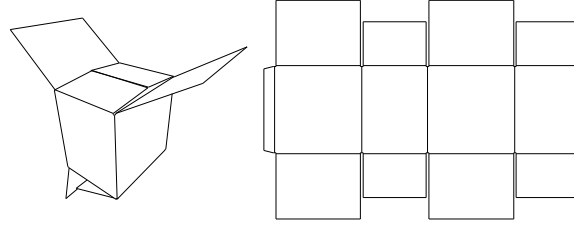
Standard box is one of the most used box models. It is also called a-type box.

Standart kutu, en çok tercih edilen kutu modellerinden biridir. Standart kutu, A box kutu olarak da isimlendirilir.

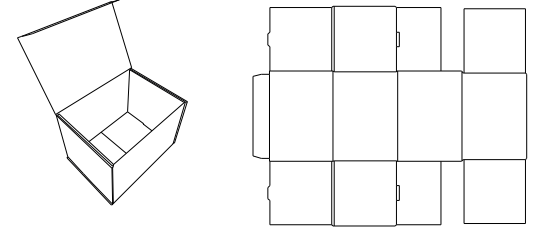
FEFCO 0201



FEFCO 0206



FEFCO 0407



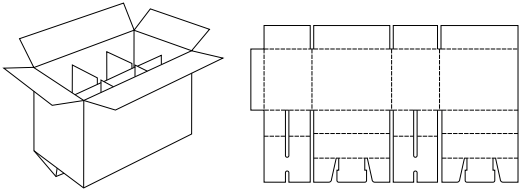
Corrugated cardboards / Oluklu mukavvalar

Special boxes / Özel kutular

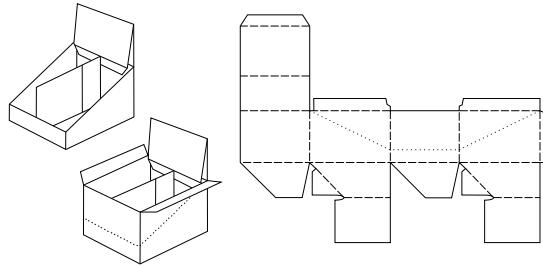
Exclusive boxes are box models produced in accordance with customers needs and differently from usual box models.

Özel kutular, müşteri ihtiyaçları doğrultusunda klasik kutu modellerinden farklı olarak üretilen kutu çeşitleridir.

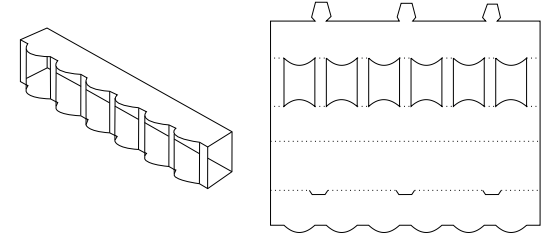
FEFCO 0207



FEFCO 0716



FEFCO 0752



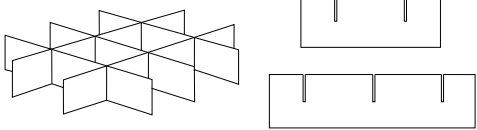
Corrugated cardboards / Oluklu mukavvalar

Separators / Seperatörler

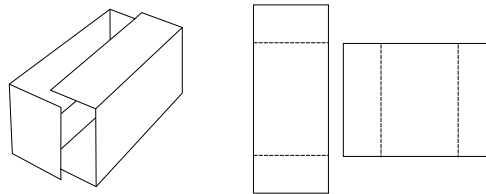
Separators are used for products in the box to protect by cushioning and keep them from moving.

Seperatör, kutu içerisindeki ürünleri ayırştırmak, ürünlerin birbirlerine temas etmesini önlemek ve sabit durmasını sağlamak için kullanılır.

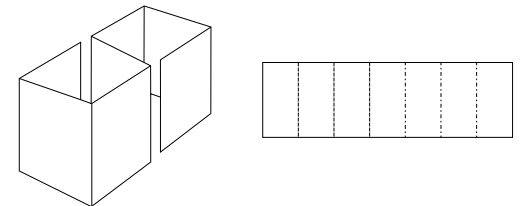
FEFCO 0933



FEFCO 0929



FEFCO 0921



A series of horizontal dotted lines for writing notes.





# LORENS GRUP

Birlik Organize Sanayi Bölgesi  
Aydınlı Mah. 3. Sok. No:4 Tuzla - İSTANBUL

Phone: +90 538 485 75 23

E-mail: [lorens@lorensgrup.com](mailto:lorens@lorensgrup.com)

[www.lorensgrup.com](http://www.lorensgrup.com)